

ALTRA FOR MARINE APPLICATIONS

As a leading multinational designer and producer of a wide range of electromechanical power transmission equipment, Altra offers products for marine applications where reliability and accuracy are necessary to avoid costly downtime, assure safe operation and consistent performance.



Podded or Azimuth Thruster Brakes

Scissor caliper and modular brake solutions for podded and azimuth drives.

Wide range of pneumatic thruster and direct hydraulic pressure applied options available with braking forces up to 110,160 lb-ft (50,000 kgf).

Svensborg Brakes

Stromag

Twiflex



High Performance Brakes

Electromagnetic fail-safe brake combined with high performance for small spaces offers the best protection against harsh environmental influences up to IP67.

Comprehensive brake torque range from 60 lb-ft (80 Nm) – 3,688 lb-ft (5,000 Nm).

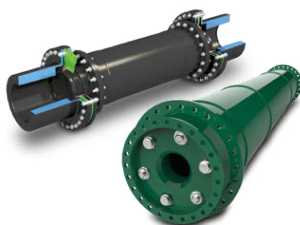
Stromag



Laylink Couplings

Unique flexible link-coupling to accommodate shaft misalignment. High shock resistance, non-magnetic and good sound attenuation properties.

Twiflex

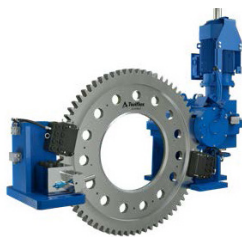


Shaft Couplings

Custom design, light-weight couplings, capable of transmitting high torques at high speeds while accepting significant angular, radial and axial misalignment. High speed couplings for turbine driven water jets.

Ameridrives

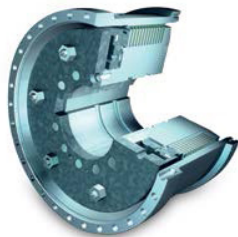
Bibby Turboflex



Shaft Turning, Locking, & Braking

Integrated shaft turning and braking system with locking device. Turning torques in excess of 334,850 lb-ft (454,000 Nm) Braking and locking torques up to 635,780 lb-ft (862,000 Nm) based on the standard range. Optional local controls and split drive gear/disc.

Twiflex



KMS

Oil cooled and hydraulically operated Multi-Disc Clutches with high thermal load capacity and low mass moment of inertia for marine transmissions. With a rated torque of over 1,475,000 lb-ft (2,000,000 Nm), a diameter of 3ft (1.2 m), and a weight of nearly 4t, it is the largest and most powerful clutch to date on the entire drive sector.

Stromag



TRI-R

Highly-flexible ring couplings, torsional soft with linear characteristic curve and high displacement properties ideal for main and auxiliary marine drives. Torque range of the TRI-R series is from 848 lb-ft (1,150 Nm) - 46,466 lb-ft (63,000 Nm).

Stromag



High Energy Clutches & Brakes

Pneumatic actuated 'high energy' sinter metallic friction clutches for heavy duty drives. High torque and power handling capability to suit a wide range of applications. The open style 'pin drive' ring provides for easy dust evacuation and promotes high cooling air flows. Suitable for combination with all major flexible coupling brands. Torque capacities up to 295,000 lb-ft (400,000 Nm)

Wichita Clutch



KMS...THC

A hydraulically operated clutch with high power density, compact design and a stand-alone solution outside of the transmission, for use in Thruster-Propulsion-Systems.

Stromag



Direct Applied, Hydraulic or Pneumatic, Fixed or Floating Shaft Brakes

Direct (pressure applied) caliper brakes for dynamic shaft stopping and holding. Compact floating solutions for limited space and axial shaft movement. Braking forces up to 110,160 lb-ft (81,250 Nm)

Svendborg Brakes

Stromag

Twiflex