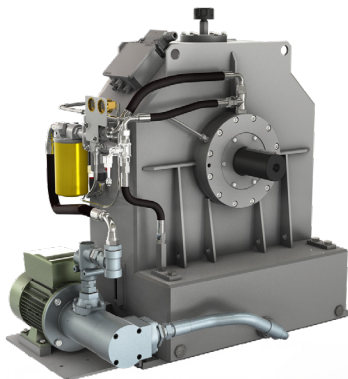
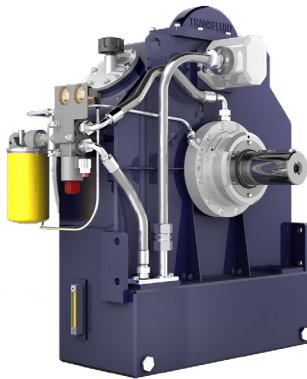


TRANSFLUID DIESEL SOLUTIONS

Innovative technology, careful materials selection, and meticulous assembly place Transfluid products at the forefront of the industrial equipment market. Transfluid products are used on a huge range of industrial and marine applications. Invest in Transfluid for smooth operation, equipment protection, and decreased operating and maintenance costs. Kraft Power has been a proud Transfluid partner for over 30 years.



Variable Fill Fluid Coupling Advantages

A variable fill fluid coupling allows you to disconnect the prime mover from the load, granting the following advantages:

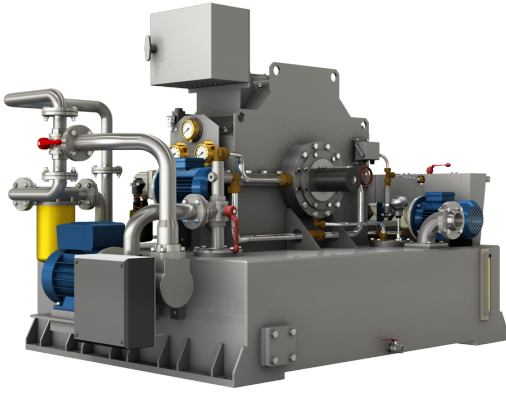
- Motor start up at no load
- Smooth start up even under nominal motor current
- Shock and overload protection
- Torsional vibration dampening
- High radial load capacity (KPTB)
- No belt slip
- Remote control
- Load positioning
- Affordable maintenance due to externally mounted main accessories
- Longer life, as there are no friction linings to wear out
- Accurate variable speed performance

KPTB

The KPTB is a variable fill fluid coupling designed to be a start up or variable speed drive. The KPTB series is designed for up to 2000 hp (1491 kw) as a start up drive or 600 hp (447 kw) as a variable speed drive.

KSL

The KSL is a soft start or variable speed device for medium and high-power machines driven by electric motors and internal combustion engines. The KSL is highly efficient. Oil is pumped from a sump to the hydrodynamic coupling circuit, where it is drained off through orifice plugs, back to the sump. Controlling the coupling's feed pump oil flow with a small AC converter changes the coupling slip characteristics and dramatically softens the start up. The same principle lets the KSL operate as a variable speed drive. The KSL can also limit the torque transmitted, disconnecting the driven machinery. The KSL is designed for up to 4500 hp (3356 kw) as a soft start or 2500 hp (1864 kw) as a variable speed drive.



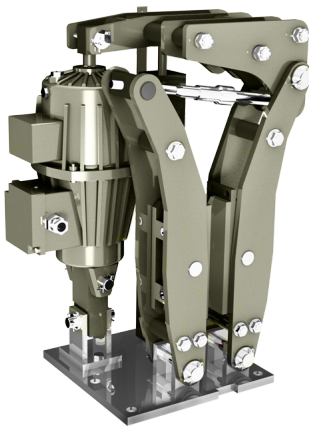
High Speed

To meet the energy savings and reliability demands modern industry expects, Transfluid developed two new lines of variable, high-speed hydraulic couplings, the KSL-HS and the KPTB-HS. Capable of input speeds of 3600RPM the HS family of couplings is used in the power, steel, paper, cement, chemical and petrochemical industries. The high-speed products are finding applications in boiler feed pumps, fans, blowers, pumps, compressors. KSL-HS and KPTB-HS high-speed couplings combine a simple design with the high efficiency of a hydraulic coupling to provide an optimal solution for centrifugal machine design.



SL Brakes

SL brakes are designed for all applications where a fail safe brake is required. The SL consists of an hydraulic assembly, a plate assembly and a driven hub which can be supplied upon request or can be manufactured by the customer. A spring load exerts a compressive force between steel plates, which are mounted on the rotating shaft, and sintered plates mounted in the gear tooth ring. When oil pressure is applied, the spring load is relieved and the plates are free to move axially on the shaft hub allowing rotation of the shaft. The brake is reapplied by releasing the oil pressure.



NBG-TFDS Brakes

Transfluid NBG-TFDS drum and disk brakes are negative type; the braking action happens when the brake is not electrically actuated. The braking force is obtained by means of a spring that, through a system of levers, transmits its amplified force to the braking drums through the braking pads. These are intended to be safety/emergency brakes. High environmental protection grade (IP56) and robust constructure make these units suitable for any hard industrial application.



Service and Spare Parts

Kraft Power service and support are available for routine and scheduled maintenance and are on call 24/7 for power emergencies. Our experienced technicians are factory-trained and certified to service and maintain peak performance for equipment of nearly all makes and models. Our commitment to your satisfaction is supported by an extensive inventory of manufacturers' genuine parts to ensure maximum uptime for your equipment.