

As a **Guascor Energy factory distributor**, Kraft Power provides engines, generator sets, and combined heat & power (CHP) systems with fuel flexibility over a broad range of power outputs and available configurations.

Flexibility Through Dynamic Fuel Blending & Series Options

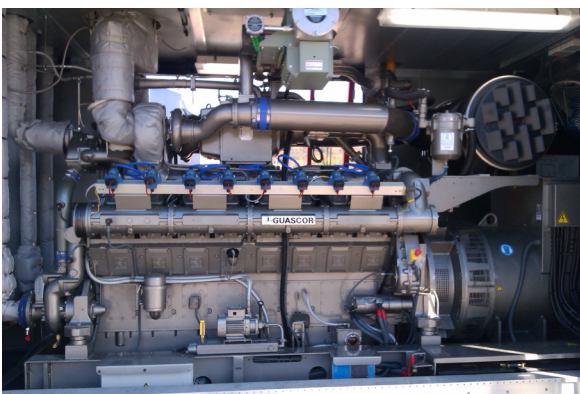
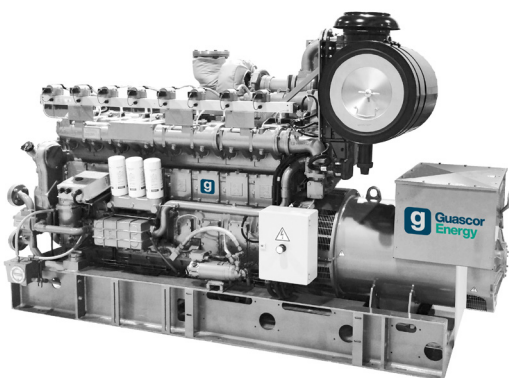
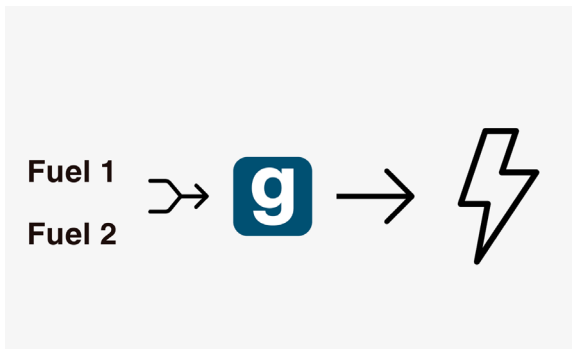
Guascor Energy offers OEM dynamic fuel blending, combining gaseous fuel supplies from two different and separate sources. Dynamic fuel blending actively manages the composition of fuels while the engine is running and keeps the desired control algorithm outcome to compensate for the variability of one fuel source (e.g. biogas) by using/supplementing a second gas (e.g. natural gas) from a known reliable source with true 0-100% blend ratio capability

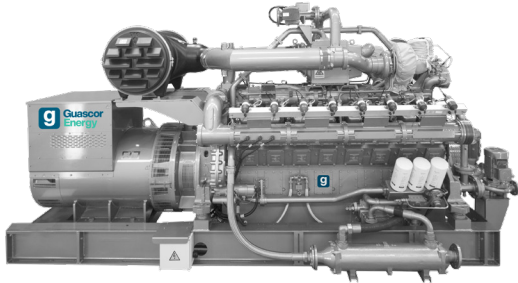
SL - Series

Ideal for power generation, CHP and mechanical drive applications, these lean-burn, electronically carbureted engines have an output range from 241 to 1030 kWe @ 60 Hz with a choice of 1200 RPM or 1800 RPM speed governing. Offering fuel blending with natural gas, including hydrogen blending, these conventional Otto Cycle combustion engines provide excellent reliability. Supplied as a stand-alone engine, genset, or fully containerized CHP unit. Integrated genset control system provides intuitive non-proprietary ease of operation.

SR - Series

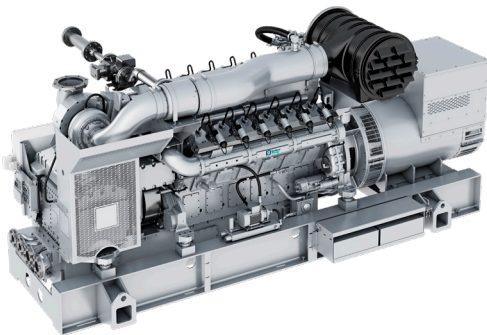
Designed for natural gas rich-burn power generation, SR Series engines offer optimized load acceptance with lowest exhaust emissions using simple dry NOx Catalyst. Outputs range from 268 kWe to 839 kWe @ 60 Hz. The SR Series features a dual circuit cooling system in which different auxiliary cooling circuit temperatures are achievable. Complete with NFPA-37 fuel gas train and exhaust catalyst, these machines are supplied as a stand-alone engine, genset or a fully containerized unit.





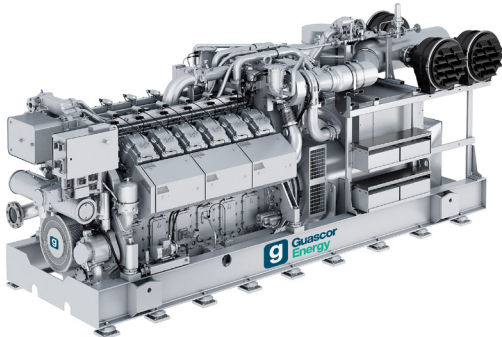
SM - Series

The best choice for Propane Gas fueled applications. Lean-burn Miller Cycle combustion and electronic carburetion, the SM series provides an excellent solution for power generation and CHP applications. Specifically designed and tested for Propane Gas operation with no power derate. Continuous electrical power generation ratings from 336 kWe to 1030 kWe.



HM - Series

High efficiency Lean-burn Miller Cycle combustion with special heads, valves, camshafts, and turbochargers. The HM family has an electrical output range from 501 kWe to 1305 kWe @ 60 Hz continuous. Fueled by natural gas, or biogas with standard factory tuning down to 0.5g NOx / bhp-hr in parallel with Utility



EM - Series

Offering best-in-class 45.5% electrical efficiency, Guascor Energy model 100EM is ideally suited to natural gas base load CHP and pure power generation applications. This true 1200 RPM engine governed package delivers all of the lower operating speed life cycle advantages with no need for a gearbox. This direct drive system also makes the 100EM more compact, to better suit space-compromised installations. Continuous rated 2007 kWe @ 1200 RPM / 60Hz



Field Service & Parts

Kraft Power is a power systems expert with over 57 years of service experience with gas engines and power systems. We maintain a large inventory of service parts, and a responsive supply chain for original and upgraded components. Custom service plans (LTSA) can be tailored to include maintenance and planned overhauls for a fixed price per operating hour. Alternatively, the agreement can cover routine maintenance only, or major services only, depending on the customer's budgeting process, and capability to self-perform some service tasks.