



daedong

3A165



Type	Rated RPM	Rated Power(kW/HP)	Max. Torque (N-m/rpm)
3A165-SE4A	2600	18.3 / 24.5	84 / 1700

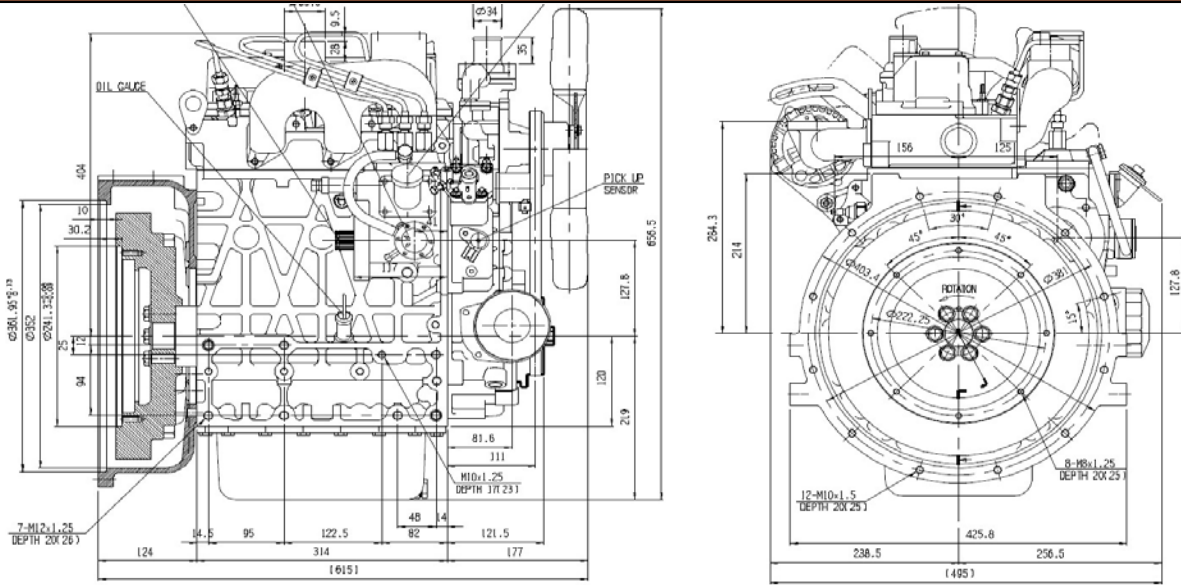
◎ GENERAL ENGINE DATA

▶ Emission Level	EEC : StageV, EPA : Tier4F, Korea : Tier4F
▶ Engine Type	3-Cylinder, 4-Cycle, In-line, Diesel, Water cooled, N/A
▶ Bore x Stroke	Ø87 x 92.4 mm
▶ Displacement	1.647 liters
▶ Compression Ratio	21.7 : 1
▶ Combustor Type	In-Direct Injection(Swirl Chamber)
▶ Rotation	Counter clockwise viewed from Flywheel
▶ Dimension (L x W x H)	615 x 495 x 656 mm
▶ Dry Weight	175kg (with Fan)
▶ High Idle Rpm	2800±50
▶ Low Idle Rpm	1050±50
▶ Aspiration	N/A
▶ Governor Type	Mechanical Centrifugal
▶ Injection timing	18° BTDC
▶ Alternator Capacity	12V-75A
▶ Firing order	1-2-3
▶ Flywheel housing	SAE No.4
▶ Flywheel	Clutch No.7-1/2
▶ Fuel Consumption Rate(at rated power)	Below 268g/kWh(200g/HPh)



daedong

◆ ENGINE DIMENSION



Designation	Length(L)	Width(W)	Height(H)	Dry weight
Value	615	495	656	175

◆ Performance Curve

18.3kW/24.5HP(3A165-SE4A)

